

VISITATION PARISH  
EASTER SUNDAY  
APRIL 20, 2025



## SPECIAL ANNOUNCEMENTS



CONFIRMATION  
at Vis

### **CONFIRMATION HIGH SCHOOL - APRIL**

- Sunday, April 27-REHEARSAL Candidates and Sponsors - **4:00 pm (Note Time Change)**
- Wednesday, April 30 - CONFIRMATION at 7:00 pm in the Church. Sponsors/candidates in assigned pew by 6:45 pm!!

### **Vis/SFX JUNIOR HIGH - APRIL**

- Sunday, April 27-REHEARSAL Candidates and Sponsors - **4:00 pm (Note Time Change)**
- Wednesday, April 30 - CONFIRMATION at 7:00 pm in the Church. Sponsors/candidates in assigned pew by 6:45 pm!!

## THEATRE AT VIS



Auditions for the summer youth musical, *The Little Mermaid*, will be next Sunday, April 27 at 5:00 pm (current 5th to 7th graders) and 7:30 pm (current 8th - 12th graders).



## CRS RICE BOWL

Thank you for your generosity to the Rice Bowl Lenten collection this year. Please remember to bring your donations to the parish office or to the narthex by April 27!



## WITHIN OUR COMMUNITY

### OUR SYMPATHY

We, as a parish, mourn the loss of our parishioner, Donovan Mouton.

**ALL ARE WELCOME TO PARTICIPATE IN  
ADORATION WHICH IS OFFERED EVERY**

**WEDNESDAY IN THE  
ST. JOSEPH CHAPEL FROM**

**9:00 AM- 5:00 PM.**

**THE ROSARY FOR THE SICK WILL CONTINUE**

**TO BE HELD IN THE**

**ST. JOSEPH CHAPEL AT 5:30 PM EVERY**

**WEDNESDAY FOR THOSE ON THE**

**PARISH PRAYER LIST.**

### REMEMBER OUR SICK

Earl Adam	Jolene Lynn
Pamela Atherton	Bob Lystad
Bill Blanck, Sr.	Scott Martens
Jerry Calkins	Tim McNamara
Marianne Carl	Tricia Melland
Mary Beth Cicchetti	Jen O'Neill
Kay Dierks	Peggy Pruitt
Whit Emanuels	Laine Riehle
Susan Erwin	Ellie Rose
Bill Fuss	Kathy Scaglia
Brooke Kuechler Harris	Gary Schafer
Kristin Heyer	Barbara Schulte
Megan Hoefler	Aimee Sesler
Margaret Howard	Sandra Sharp
Joe Irwin	Kathy Sims
William Jewell	Danny Smith
Bryan Larson	Special Intention
Jeanne Lendabarker	Salvador Valldeperas, Sr.
	Dave Wittrock

### MILITARY

The parish community continues to pray for parish members and their families who are serving in the armed services: Major Philip Martin, Fort Leavenworth, KS; Major Chris Oppenlander, Hill Air Force Base, UT; Major Gisselle Oppenlander, Hill Air Force Base, UT.

### FUNERAL MEAL TEAMS

**On Deck:** Team # 12

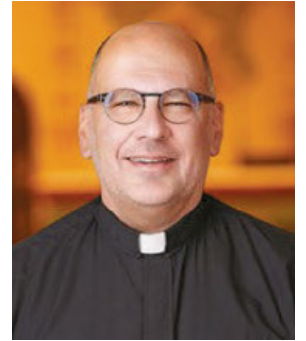
**On Alert:** Team # 6



## PASTOR'S CORNER

Dear Parishioners,

Easter is hope. In a world where so much can frighten and discourage, Easter is a bold proclamation of what God can do, does do, will do for us. If God can bring life forth from the tomb, if God can bring redemption through an instrument of torture like the Cross, God can raise up hope in the human heart, even in the face of illness, corruption, fear, greed, violence and all that threatens us. God doesn't remove the threats from our midst, but God does show us the redemptive and restorative path, the promise of life buried in daily human struggle.



Each year carries its own challenges. Each year presents its own crosses. And so Easter hope rises in new and unexpected ways each year as well. Faith is dynamic, emerging in new ways from the tomb of our struggle and suffering. Easter is the definitive proclamation and embodiment of this hope-filled faith. So with all that has been, with all that is to come, with all that we are living today, life is redeemed and hope is restored.

Peace,

Fr. Greg

## VACATION BIBLE SCHOOL

A promotional poster for Vacation Bible School (VBS). The background is a dark blue starry night sky. At the top, the words "SAVE THE DATE" are written in large, white, block letters with a purple outline. In the center is a graphic featuring a bear silhouette filled with a scenic landscape of mountains, a lake, and trees. Below the bear, the words "TRUE NORTH" are written in large, 3D wooden-style letters. A blue banner below the letters reads "Trusting Jesus in a Wild World". At the bottom of the banner, it says "Totally Catholic Edition". At the very bottom of the poster, the text "VBS JULY 28-31, 2025" is written in large, white, block letters with a purple outline.

**MASS INTENTIONS  
APRIL 22-27**

**Tuesday, April 22**  
6:45 am Fr. Richard Carney †  
8:15 am Fritz Gastreich †

**Wednesday, April 23**  
6:45 am Michael Messina †  
8:15 am Steve Daly †

**Thursday, April 24**  
6:45 am Robert Hughes †

**Friday, April 25**  
8:15 am Lisa Sokoloff †

**Saturday, April 26**  
8:15am Ed Welch †  
4:00 pm People of Visitation

**Sunday, April 27**  
8:00 am Kelly Case †  
10:30 am Martha Beckers †

ALTAR SERVERS  
E MS  
LECTORS  
SACR. USHERS

**MINISTRY SCHEDULE - APRIL 26-27, 2025**

4:00 PM	8:00 AM	10:30 AM
C. Juhnke B. Murray C. Langlade	C. McCoy G. Malter L. Maginn	K. Schilling sub req. T. Rodden K. Lynch
S. Garrett M. Garrett S. O'Neill M. O'Neill L. Reichman K. Reichman C. Roewe sub req. B. Roewe A. Sonnenberg K. Taylor J. Waldrup	V. Coppinger K. Maginn A. McDonald J. McGee R. Paczkowski A. Paczkowski K. Strauss M.J. Thompson A. Thompson M. Widmer B. Winget	T. Mayer L. McLiney L. Meyers G. O'Brien K. Osbern M. Roach A. Smith N. Spachman C. Spaeth D. Valenti K. Van Asdale
T. Fanning B. Nelson	T. Dakan	G. Starman
K. Levi P. Levi D. Winningham	K. Banes M. Dakan C. Schorgl	A. Barber M. Benvenuti S. Benvenuti
C. Ruiz	B. Truta	S. Mayer

**PARISH BOUNDARIES**

State Line on the West to Oak St. on the East;  
47th Street on the North to Meyer Blvd on the South

**PARISH OFFICE, Monday-Friday: 8:00 AM - 4:30 PM**  
5141 Main St, Kansas City, MO 64112  
Phone 816-753-7422 Fax 816-753-5505  
Web Site [www.visitation.org](http://www.visitation.org)

**PARISH STAFF 816-753-5155 x#**  
Pastor, Fr. Greg Haskamp x1302,  
[frgreg@church.visitation.org](mailto:frgreg@church.visitation.org)

Pastoral Associate, Jennifer Greene x1309,  
[jennifer@church.visitation.org](mailto:jennifer@church.visitation.org)

Pastoral Associate, Karen Miller x1308,  
[karen@church.visitation.org](mailto:karen@church.visitation.org)

Pastoral Associate, Teresa Albright x1306,  
[teresa@church.visitation.org](mailto:teresa@church.visitation.org)

Director of Liturgy/Music, Alejandro Manso x1307,  
[alejandro@church.visitation.org](mailto:alejandro@church.visitation.org)

Director of Stewardship, Megan Burdolski x1305,  
[megan@church.visitation.org](mailto:megan@church.visitation.org)

Business/Financial Manager, Isaac Uzcanga x1313,  
[isaac@church.visitation.org](mailto:isaac@church.visitation.org)

Parish Secretary, Joni Chichuk x1301,  
[joni@church.visitation.org](mailto:joni@church.visitation.org)

Ministry Scheduler/Bookkeeper, Janet Ridder x1304,  
[janet@church.visitation.org](mailto:janet@church.visitation.org)

Priest in Residence, Fr. Charles Rowe

**BULLETIN DEADLINE Noon Monday**

**SACRAMENTS**

Anointing of the Sick by appointment  
Fr. Greg and Jennifer Greene

Eucharist to Homebound and Hospital, Jennifer Greene

Sacrament of Matrimony, Contact Jennifer Greene to begin marriage preparation.

Sacrament of Confirmation, Youth Jennifer Greene

Sacrament of Infant Baptism, Adult Confirmation and Sacraments of Initiation, *For those who wish to become Catholic.* Teresa Albright

**PARISH COUNCIL 2024/25**

Stephen Bowen	Kristie Larson
Bill Donath	Melissa Lising
Jim Erlacker	Steve O'Neill
Mary Gigliotti	Katie Wendel
Fr. Greg Haskamp	Kathleen Wiedeman
Megan Burdolski, Staff	

**School Office**

5134 Baltimore, Kansas City, MO 64112  
Phone 816-531-6200 ....Fax 816-531-8045

Principal, Dr. Melissa Wagner x3140  
Secretary, Bridget Winget x3136

St. Vincent De Paul Help Line  
816-753-9061

Diocese of Kansas City St. Joseph  
Ombudsman, Joe Crayon 816-812-2500  
Victim Assistance Coordinator,  
Whitney True-Francis 816-392-0011

## RACIAL JUSTICE



Just Faith Racial Healing is an eight-week program that fosters active listening, dialogue and prayer as a small group explores and deepens awareness of the history of privilege and racism.

The current Just Faith group, the ninth such group that our parish Racial Justice committee has facilitated, is nearing completion. True to the experiences of the past 90+ participants, this group has formed a bond of support, and deepened their understanding of the challenges of racism. The final sessions will include a session on the true theology of Dr. Martin Luther King, Jr. and participation in Johnson County Library's Dividing Line tour. On May 7, Terri E. Barnes, president of the Nia Project and member of the Mayor's Task Force on Reparations will be the speaker for the final class. All past Just Faith participants are invited to attend the May 7 session.

We are humbled by the commitment of this Just Faith group, which includes Vis parishioners, parishioners from other parishes, as well as diocesan Vicar General, Fr. Charles Rowe and the Director of the Office of Life and Justice, Deb Sheppard. It is a privilege to share the journey with all of this group.

The parish Racial Justice Committee will continue to offer the Just Faith Racial Healing in the months to come. If you would like to know more, please contact RJC co-chairs, Linda Hughes (lchteach20@gmail.com), Peg Ekerdt (peggyekerdt@gmail.com) or Karen Miller (karen@church.visitation.org) of the parish staff.

## GOLDEN SHAMROCKS

### Visitation Golden Shamrocks

# Spring Fling Brunch

*Tuesday, May 6 following 8:15 am Mass*



**Join us as we celebrate the season  
of spring with faith, food,  
fellowship & friends!**

**RSVP to 816-753-7422**



## PASTORAL CARE



### FAITH & GRIEF

**WEDNESDAY, MAY 7 AT 12:00 NOON IN TIGHE HALL**

*Speaker: Marcia Tammeus - A Reflection - Three Losses due to Cancer (father, sister and brother-in-law)*

Cancer is not kind. Many of us have experienced loss due to this disease. The saving grace for me was being able to say goodbye with the hope of a peaceful death for each of them. I learned a lot from these experiences as my family did our best to walk alongside them. I returned to Vermont often to do just that, whenever possible.

Visit [faithandgrief.org](http://faithandgrief.org) or scan the QR code to RSVP for a gathering and learn more about all our grief programs online and In-person.



### Faith & Grief Roundtables Planned

All Roundtables are presented virtually. The link for the event will be sent to those who register. Watch the Faith & Grief website each month for further information. [www.faithandgrief.org](http://www.faithandgrief.org)

## PASTORAL CARE

Visitation parish wants to support our married couples—always—in good times and in hard times. If you would like to make the weekend, but are concerned about the cost (\$200) we as a community want to help. Contact Jenny Greene at 816-753-5155 x1309 at the parish office for assistance.

HelpOurMarriage.org  
**RETROUVILLE**  
A LIFELINE FOR MARRIED COUPLES  
FOR A STRONGER MARRIAGE

### DO YOU NEED MARRIAGE HELP? RETROUVILLE IS DIFFERENT.

Retrouvaille Is Very Different Than Other Marriage Programs. Some spouses resist the idea of attending the program, out of concern that they will be required to expose their personal lives. None of this is true. In fact, the program is entirely unique, and most couples find that this is the very thing that worked when all else failed. We are told constantly that this is one of the best kept secrets in the world, and couples regularly comment that they wish they had done the program long before they did; That it would have saved them so much pain and anguish.

Upcoming  
Kansas City  
Weekend  
May 16-18



800.470.2230

you



# SCHOOL

# SHAMROCK SNAPSHOT

## 2025 TOPS TOURNEY...

The annual TOPS (Tired Old Parents Playing Sports) Tournament, hosted by the Visitation Athletic Committee (VAC), brought together our community for a spirited week of volleyball and dodgeball—raising funds for both VAC and the 8th-grade class. Parents teamed up with their child's grade level, showing off their skills and sportsmanship in fun, friendly competition.

Congrats to our Champions:  
Men's Volleyball: Kindergarten  
Women's Volleyball: 5th Grade  
Men's Kickball: 1st Grade  
Women's Kickball: 1st Grade

A special shoutout goes to our incredible 8th-grade families, who helped run the event and fire up the grills. As some of these families prepare to graduate their last Visitation student, we thank them for their years of dedication and generous support.

Thank you to everyone who played, volunteered, and cheered—we couldn't have done it without you!





# SUMMER Vis-covery Camp

WELCOME TO VIS-COVERY CAMP! OUR INTERACTIVE LEARNING CAMP IS DESIGNED TO INSPIRE KIDS THROUGH HANDS-ON ACTIVITIES, EXPLORATION, AND REAL-WORLD PROBLEM-SOLVING. EACH WEEK, CAMPERS WILL DIVE INTO THEMES THAT COMBINE SCIENCE, ART, TECHNOLOGY, AND TEAMWORK. WITH A PERFECT BALANCE OF EDUCATION AND FUN, OUR CAMP PROVIDES AN ENVIRONMENT WHERE KIDS CAN EXPLORE, BUILD NEW SKILLS, AND MAKE MEMORIES.

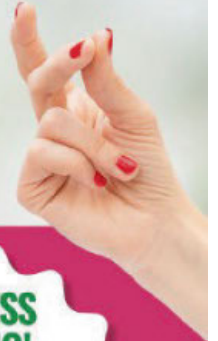
## INCOMING FIRST GRADE TO 6TH GRADE

- Week 1 : June 2nd - 6th Slice of Summer
- Week 2 : June 9th - 13th Into the Wild
- Week 3 : June 16 - 20th (14th closed) Space Odyssey
- Week 4 : June 23rd - 27th Under the Sea
- Week 5 : July 7th - 11th Lights, Camera, Action
- Week 6 : July 14th - 18th Arts Extravaganza
- Week 7 : July 21st - 25th Mad Scientist

DIRECT QUESTIONS TO  
[cjohnson@viskc.org](mailto:cjohnson@viskc.org)  
AND  
[kmcsorley@viskc.org](mailto:kmcsorley@viskc.org)



Visitation's  
*flower sale*  
OPEN TO THE PUBLIC!



HAVE YOU  
PRE-ORDERED?

EFFORTLESS  
SHOPPING!

Order online with  
easy, breezy pickup  
on designated  
dates!

ORDER EARLY!

Quantities are limited and favorites go fast!

Also available...

- The World's Best Trash Bags
- Awesome Vis Merch

VISITATIONSALES.COM

**The Diocese of Kansas City-St. Joseph is committed to combatting sexual abuse in the Church.** If you are a victim of sexual abuse, or if you observe or suspect sexual abuse: 1. Call the Missouri Child Abuse Hotline at 1.800.392.3738 (if the victim is currently under the age of 18). 2. Contact your local law enforcement agency or call 911. 3. If the abuse involves a priest, deacon, employee, or volunteer of the Diocese of Kansas City-St. Joseph, report the suspected abuse to the Diocesan Ombudsman, Joe Crayon, at 816.812.2500 or [crayon@ombudsmankcsj.org](mailto:crayon@ombudsmankcsj.org). The Diocese has a sincere commitment to providing care and healing resources to victims of sexual abuse and their families. Please contact the Victim Advocate at 816.392.0011 or [victimadvocate@diocesekcsj.org](mailto:victimadvocate@diocesekcsj.org) for more information.



**MARTZ BROS.**  
MARTZBROSLAWN.COM



**catholicmatch<sup>®</sup>**  
Missouri



CatholicMatch.com/MO

**LET'S GROW YOUR BUSINESS**  
Place Your Ad Here  
and Support Our Parish!



**CONTACT ME James Bradley**  
jbradley@4LPi.com • (800) 950-9952 x2655

Give us a call today for weekly lawn care services!

**MATTCO**  
LANDSCAPE CONTRACTING  
FOR A FREE ESTIMATE: (816) 591-5283

**WE APPRECIATE OUR ADVERTISERS!**

*What's your next move?*



**NATALIE L. FREEMAN**  
816-304-1578  
natalie@nlfrealestate.com




**IF YOU LIVE ALONE**


**MDMedAlert!**™ STARTING AT \$19<sup>95</sup>/mo.

- ✓ Ambulance
- ✓ Police/Fire
- ✓ Family/Friends
- ✓ GPS & Fall Alert

**CALL NOW! 800.809.3570** md-medalert.com

**BETSY O'BRIEN**  
Principal, Realtor®  
M 816.668.7740 | O 913.382.6711  
betsyobrien@compass.com



Betsy O'Brien is a real estate broker-salesperson affiliated with Compass RE. Compass Realty Group is a licensed real estate broker and abides by equal housing opportunity laws.

**Remodel Moore**



**SUPPORT OUR PARISH**

Local business ads sponsor the printing of our bulletin.  
**4lpi.com/adcreator**

**Place Your Ad Here and Support our Parish!**  
Instantly create and purchase an ad with

**AD CREATOR STUDIO**



**4lpi.com/adcreator**

**SHORT STAFFED?**  
Place an ad here to find new local talent for your business.



**CALL 800-950-9952**



**Kristin Searle**  
Founder/Real Estate Agent

913.909.8324  
@searlegirls  
kristin@westvillagerealty.com

4434 W. 90th Terr.  
Prairie Village, KS

Parishioner

**WEST VILLAGE REALTY**  
kristinsearlewestvillagerealty.com

**SUPPORT OUR ADVERTISERS!**



**Benjamin Franklin** *If there's any delay, it's you we pay!*  
THE PUNCTUAL PLUMBER

Call: 816-333-6789  
For All Services Visit:  
[www.benfranklinplumbingKC.com](http://www.benfranklinplumbingKC.com)  
**MENTION THIS AD FOR \$25.00 OFF SERVICE VISIT**

**ADT-Monitored Home Security**  
Get 24-Hour Protection From a Name You Can Trust

- Burglary
- Flood Detection
- Fire Safety
- Carbon Monoxide

**833-287-3502**



**Brain Balance<sup>®</sup>**  
Overland Park | Kansas City N

Poor Focus | Learning & Sensory Issues | Anxiety | Behavior

Improve the Foundation of Development

Customized Programs | Measured Outcomes  
Ages 4 & up

6414 College Blvd, Overland Park | 8602 N Dixson Ave, Kansas City | (913) 627-9400  
Ann & Jim Cahill, Holy Spirit parishioners

**SUPPORT OUR PARISH**

**A few hours of therapy can turn your life around.**

**BRIAN HEYDON**

Licensed Professional Counselor  
Certified Imago Relationship Therapist

816-523-1600 [www.brianheydon.com](http://www.brianheydon.com)  
8080 Ward Parkway, Ste. 230, Kansas City, MO 64114



**Lakeview FAMILY DENTAL**

Taking New Patients

Julianna Ervin, DDS.  
Parishioner

Lakeview Family Dental  
7000 W 121<sup>st</sup> Suite # 200  
Leawood, KS

Schedule an Appointment  
913-344-9990

**State Farm**

**Eric Atwell**  
Agent/Parishioner

913.888.1001  
[eric@ericatwellinsurance.com](mailto:eric@ericatwellinsurance.com)  
[www.ericatwellinsurance.com](http://www.ericatwellinsurance.com)  
Serving all of Kansas City



RENTERS HOMEOWNERS CONDO AUTO PET PERSONAL ARTICLES BUSINESS LIFE HEALTH



**NESTEL INSURANCE AGENCY**  
*We are an Independent Agency With Over 30 Years of Experience*

- Auto
- Home
- Life
- Commercial

**Mary Nestel**  
**816-361-6442**  
 9233 Ward Parkway Ste 124  
 Kansas City, MO 64114

[www.nestelinsurance.com](http://www.nestelinsurance.com)  
[info@nestelinsurance.com](mailto:info@nestelinsurance.com)

**LINC**  
 Local Investment Commission

**Part-time Child Care Jobs**  
**Now Hiring!**

Apply at: [kclinc.org/parttimejobs](http://kclinc.org/parttimejobs)

LINC Caring Communities Sites  
 North Kansas City - Kansas City Public Schools  
 Center - Hickman Mills - Grandview

**POSY'S PLACE**  
 Pet In House Hosting  
 Pet Sitting  
 Dog Walking  
 House Visits  
 Kennel Day Care  
 Pick Up / Drop Off  
 816-520-6930

**Edward Jones**  
 Member SIPC

Unsure whether you can retire?  
 Call to schedule a one-on-one.

**Nick Marlo, AAMS™**  
 Financial Advisor  
 4900 Main St Suite 320  
 Kansas City, MO 64112  
**816-756-5675**

[edwardjones.com](http://edwardjones.com)

**Kirsten McGannon**  
 Real Estate Agent

Your Trusted Home Advisor:  
 Buying, Selling, Investing  
 Visitation Parishioner, Top  
 Producer on KB Team  
*Honesty, Exposure and Results*

Cell: 816-213-1075  
 Office: 913-239-2069  
[Kirsten.McGannon@ReeceNichols.com](mailto:Kirsten.McGannon@ReeceNichols.com)

**KB KOEHLER BORTNICK** **ReeceNichols**

WE APPRECIATE OUR ADVERTISERS!

*We Put the Life Back in Life Insurance™*

**Debbie Baker**  
 Call Me: **816-361-4200**  
 6300 Walnut, Kansas City, MO 64113

**State Farm**

**GREAT AMERICAN INVESTORS, INC.**  
 Investment Securities  
**Ted Colburn**  
 Owner • Parishioner  
 (913) 384-1800  
 Member FINRA/SIPC  
[tedburn@greatamericaninvestors.com](mailto:tedburn@greatamericaninvestors.com)

**WALDOPIZZA**  
 KANSAS CITY'S  
 GREAT LITTLE PLACE FOR PIZZA

**816-363-5242**  
 dine in • carry out • delivery • party room

**ERIN WALSH FLOOD, DDS**

7301 Mission Road #203  
 Prairie Village, KS 66208  
 Phone: 913.362.7320  
 Fax: 913.362.8733  
 Cell: 816.509.2371  
[drflood@erinflood-dds.com](mailto:drflood@erinflood-dds.com)  
[www.erinflood-dds.com](http://www.erinflood-dds.com)

**CRESTWOOD PAINTING.com**

816 805-4515

Neighbors

**FORMING MEN AT THE ROCK**  
 ROCKHURST HIGH SCHOOL

[WWW.ROCKHURSTHS.EDU/ADMISSIONS](http://WWW.ROCKHURSTHS.EDU/ADMISSIONS)

**SOMERSET FAMILY DENTISTRY**  
 7930 Lee Boulevard  
 Leawood, Kansas 66206  
**913-383-5373**  
[www.SomersetDentalTeam.com](http://www.SomersetDentalTeam.com)

Parishioners: MeLinda A. Garcia, DDS, Nick Cruz (Sophomore), Axle (8th) & Isla (2nd)

YOUR VISIT TO SOMERSET FAMILY DENTISTRY WILL INCLUDE:

- ◆ Outstanding, Comprehensive, and Preventative Dental Care
- ◆ Cosmetic & Restorative Services
- ◆ An Experienced, Compassionate Team ◆ Family Focused with Children's Area

We Accept Most Insurances    Compassion / Integrity / Community / Team

**Weichert** Welch & Company

**JAMIE CLOSSON**

3408 Main Street,  
 Kansas City, MO 64111

816.694.9409  
[jamie@jclossonrealestate.com](mailto:jamie@jclossonrealestate.com)

Your Neighborhood Realtor® and Visitation Parishioner for over 30 years

**REAGAN FENCE**

Proudly Serving Kansas City

816.550.4404 • [ReaganFence.com](http://ReaganFence.com)

Residential/Commercial/Fence Design & Construction

**State Farm**

**Julie Stoll**  
 State Farm Agent

Office: 913-722-6200  
 Cell: 913-269-7124  
[julie@juliestoll.com](mailto:julie@juliestoll.com)

Check out the Visitation School gym to see our work!

**Jeff Chaney**  
**(816) 444-0892**

**MUEHLEBACH FUNERAL CARE**

**Muehlebach Funeral Care & Cremation Services**

816-444-2060  
[www.muehlebachchapel.com](http://www.muehlebachchapel.com)

**MD AUTO REPAIR**  
 Your Trustworthy Mechanic

36 Mo Warranty - Financing Available - Customer Shuttle  
**\$10 OR 5% OFF WITH AD**  
 816-444-7100 • [mdautorepairofkc.com](http://mdautorepairofkc.com)

**Matt Palcher** **ReeceNichols REAL ESTATE**  
 Local Real Estate Agent  
 434 W. 47th St.  
 Kansas City MO 64112  
**O: 816.709.4900 • C: 913.302.1888**  
[mattpalcher@reecenichols.com](mailto:mattpalcher@reecenichols.com)  
 Licensed in KS & MO

**MALACHY CONNOR DESIGN & LANDSCAPE**

**Landscape Design & Installation**

Let me design your dream landscape now!  
 Book now  
**913-515-4166**  
[MALACHY@CONNORLANDSCAPING.COM](mailto:MALACHY@CONNORLANDSCAPING.COM)

**A face you know... A name you can trust!**

**BROOKSIDE REAL ESTATE COMPANY**  
 Serving Brookside and Beyond

**Jim Kraus, Jr. Broker | Owner**  
 2nd Generation Lifetime Parishioner  
 Licensed in Missouri & Kansas  
[www.BrooksideRealEstate.com](http://www.BrooksideRealEstate.com)  
 No Additional Buyer or Seller Fees

Cell: 816.806.7653  
 Office: 816.333.3330

**Joseph Renovations LLC**

(816) 365-3673  
[john@josephrenovationskc.com](mailto:john@josephrenovationskc.com)  
 John Harrison

**Say Good-bye to Clogged Gutters!**

Receive a \$100 Visa gift card with your FREE in-home estimate

**\$99 Installation\***

**LeafGuard®** is guaranteed never to clog or we'll clean it for FREE\*

- Seamless, one-piece system keeps out leaves, pine needles, and debris
- Eliminates the risk of falling off a ladder to clean clogged gutters
- Durable, all-weather tested system not a flimsy attachment

Call today for your FREE estimate and in-home demonstration  
**CALL NOW 816-336-1009**

\*Guaranteed not to clog for as long as you own your home, or we'll clean your gutters for free.

**ENGLERT LeafGuard**  
 Get it. And forget it.™

**WE'RE HIRING!**  
 AD SALES EXECUTIVES

BE YOURSELF.  
 BRING YOUR PASSION.  
 WORK WITH PURPOSE.

- Paid training • Some travel
- Work-life balance
- Full-Time with benefits
- Serve your community

Contact us at [careers@4lpi.com](mailto:careers@4lpi.com) or [www.4lpi.com/careers](http://www.4lpi.com/careers)



# SPRING BIBLE STUDY FOR ADULTS

This Easter season, join us for a thought-provoking and engaging Bible study based on Dr. Amy-Jill Levine's book, *"The Sermon on the Mount: A Beginner's Guide to the Kingdom of Heaven."*

**6 WEDNESDAY SESSIONS | BEGINS APRIL 23 (6:30—8:30 P.M.)**

Together, we'll explore Jesus' most famous sermon. This study is ideal for those seeking to deepen their understanding of the New Testament through a blend of scholarly insight and spiritual reflection.

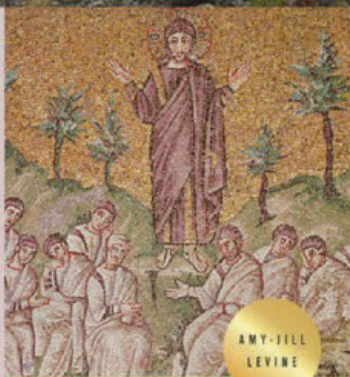
**"For Jesus, LIFE meant being part of a community. His comment, 'the Kingdom of God is among you' demonstrates that communal presence. When people take seriously the Sermon on the Mount... the Kingdom is present."**

**- Dr. Amy-Jill Levine, Author**

## EACH SESSION INCLUDES:

- A short video teaching by Dr. Levine
- Facilitated group discussion of key scriptural passages
- Thoughtful reflection and study
- Facilitated by Pastoral Minister, Teresa Albright (MA, Boston College)

*Email or Call to register:*  
[teresa@visitation.org](mailto:teresa@visitation.org)  
-OR- (816) 753-7422



**SERMON** on  
**the MOUNT**

A BEGINNER'S GUIDE TO THE KINGDOM OF HEAVEN

## ALL ARE WELCOME!

**Why join? Hear what past participants said:**

*"I have enjoyed the conversations & the fellowship very much."* – Ricki

*"Loved our discussions and meeting everyone!"* – Mary Beth

*"It was really a wonderful class. I learned a lot."* – Julie

*"Thank you for your dedication to enrich our faith!"* – Margie

**Come as you are — bring your questions and your curiosity!**